

Hwatime T10

Fetal Monitor

Features

- 10.2" colorful LED display
- Flexible , light design , easy operation
- Flip-Screen from 0 to 90 degree , large font , multi interfaces display
- Silicone keypad and knob two operating modes
- Data storage , reviewing , print
- Simultaneously maternal and fetal parameters display
- Display modes:standard interface, big font interface
- Monitoring single fetus , twins (Optional)
- Fetus Wakeup function (Optional)

Standard parameters:

FHR , TOCO , FM, thermal printer

Optional parameters:

Twins probe

ECG, Spo2, NIBP, respiration, temperature

T10

Fetal Monitor



Hwatime

Hwatime Medical•Make your life better

7/F, Block A, Bofook Jewelry Industry Park, No.33,
Bulan Rd, Longgang District, Shenzhen City
Tel: 0086-755-28260108 Fax: 0086-755-85221277
E-mail: sales@hwatime.com



website: www.hwatime.com

Customer service hotline : **4000 670 888**

Handset two-dimensional code

- Hwatime. All Rights Reserved. The product specifications are subject to change without further notice.
- See instructions for contraindication or precautions

T10

Fetal Monitor

Hwatime T10

Fetal Monitor

Dimension 295x240x73mm

Weigh 3.5KG

Size 10.2inch

Resolution 800*600

FHR

Measurement range: 50 to 210

Normal range : 120 to 160 bpm

Alarm range :

Up limitation 160,170,180,190 bpm

bottom : 90 , 100 , 110 , 120 bpm

TOCO

0 to 100 Kpa

Resolution ratio 1%

AFM

Remark time by hand

The effective interval should be in 5 seconds

Bandwidth 0.1 to 2.5 H

Resolution ratio 1%

Curve Display

Curve line display supported by

American standard 30 ~ 240

International standard 50~210

Ultrasonic Intensity

Less than 5 mw/cm2

Frequency

1.0 MHZ

Alarm& Data

Audible and visual alarming ,

50 groups alarm events reviewing

60 hours CTG storage ,

power failure data storage

Fischer Analysis results automatically

Probe

12 crystals in probe

Wide-beam , multi-crystal water

Proof FHR probe , high sensitivity ,

stable signal detection

Flat surface waterproof TOCO pobe

Beam /soud intensity <5 mw/cm2

ECG

Multiple waveforms

Respiration Rate

Rate: Adult: 7 ~ 120 rpm

Heart Rate

Range Adult 15~300 bpm

Accuracy ± 1 bpm

Pulse Rate

Range: 20~250bpm

Resolution:1bpm

SpO2

Range 0 to 100%

Resolution 1%

NIBP

Adult range: SYS 40-270mmHg

DIA 10-215mmHg

MEAN 20-235mmHg

Maximum Mean error accuracy: ± 5 mmHg

Temperature

Range, Accuracy 0°-50°C : ± 0.1 °C

Bulid-in Thermal Printer

150/152mm wide paper ,

compatible with American/International standard

25 mm/s high speed playback

and print function

GEL

Skin irritation , non -allergic .

Chemically stable , inhibition of bacterial type

Battery

Built-in rechargeable lithium battery,

3.5 hours for battery life

Work Environment

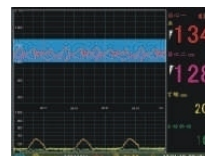
Operating Temperature (5°to 40°C)

Storage Temperature (-10°to 55°C)

Operating Hunidity less than 85 %

Power Requirement

Voltage AC100-240V,50/60HZ 60VA



Standard interface for three parameters: FHR, FM, TOCO



Standard interface for nine parameters: FHR, FM, TOCO, ECG, NIBP, SpO2, RESP, TEMP



Big Font interface



Wide-beam, Multi-crystal waterproof FHR probe



Can stand on the table or hand on the wall